

AZ LAND OWNERSHIP

Who owns what in AZ -

Different agencies own different land in Arizona, and all have different regulations.

Vehicles—Decals

Not all agencies require the same equipment or licensing so you need to check with the area you will be in if you can drive an unlicensed or RV plated vehicle.

Typically, in Arizona most full-size vehicles are license for travel on all roads. So, they would be legal in almost all areas where vehicles are allowed. This does not include single track or motorcycles which can travel on much smaller roads.

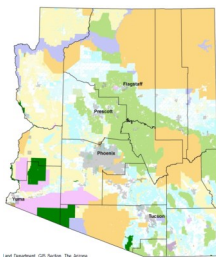
ATV's and side by sides can also be licensed for travel on roadways. But all of these vehicles are required to have an Arizona OHV Sticker. This includes single track and off road motorcycles. Refer to the Arizona Game and Fish website for OHV information for requirements. Refer to the AZ Game and Fish website for all requirements..

An individual OHV decal needs to be purchased for every vehicle you own that fits the criteria. These can be purchased through the Arizona Department of Transportation or from the Service Arizona website at the following location: <https://servicearizona.com/offHighwayDecal?otherclick>

Out of State registration can be done at the Arizona Game and Fish Dept. You will need to provide insurance and registration for all your vehicles to obtain an OHV deal, refer to the Arizona Game and Fish Department website for more OHV information: https://azgfd.gov/outdoor_recreation/off_highway.shtml

Arizona State Land Department

Arizona State Trust Land (ASLD) **is not public land** and created by a congressional bill enacted in the late 1800's to provide money for the public school system. When a parcel is sold, the money is used to benefit the schools. A valid ASLD permit is required to cross or stop on Arizona state land. State land is checkerboarded across the state, so it is difficult to



Land Ownership: GIS State, The State



know when you are on state land.

The OHV sticker allows you to cross state land, but you are not allowed to stop. If you do, you can be fined. A recreational state land permit allows you to drive across, camp or stop. A hunting license is **not** enough, as it is only for use in pursuit of game or scouting. You can be fined if you do not have a state land permit.

The recreational permit is \$15 for an individual and \$20 for a family. It is recommended that all vehicles have a state land permit even if you have an OHV sticker. You can get your Arizona State Land permit at the AZ State Land Main Office, refer to AZ Contacts or online at <https://land.az.gov/natural-resources/recreational-permits>

Arizona State Parks



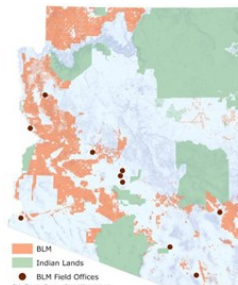
AZ State Parks (ASP) only owns the state parks.

The ASP oversees the OHV Grant program that is fee based "pay to Play" type system. The money is used to help the AZ Game and Fish Dept. and the AZ State Land Department with Law Enforcement with the majority of the money going to OHV based grants in Arizona.

Bureau of Land Management



The Bureau of Land Management (BLM) administers approximately 12.2 million acres of public lands and 17.5 million subsurface acres (water/mineral rights) in Arizona with 8 field offices. The offices are State Office serves all of Arizona with the office in central Phoenix; Strip District Office serves northern Arizona with an office in St. George Utah; Colorado River District Office serves western Arizona with offices in Kingman, Lake Havasu City and Yuma; Gila District Office serves southern Arizona with offices in Tucson and Safford and the Phoenix District Office serving central Arizona with an office in north Phoenix. For more information refer to the BLM website at www.blm.gov/arizona.



When referring to OHV use, BLM refers to motorized recreation about roads and trails. Some areas of BLM managed land have maps available.

Special Recreation Permits (SRP) are required for commercial use, competitive events, group activities, recreation events and events providing vending services

or supplies associated with the recreation event. The information for permits can be found in the H-2930 Recreation Permit and Fee Administration Handbook.

The BLM requires permits for all events that are larger than 25 participants. Each district might be different so check prior to your event.



Requirements for permits:

- All permits require 180 calendar days before the event to process.
- Events require liability insurance.
- Cost for organized groups, competitive, commercial/competitive are \$5/participant/day plus any use fees.
- Cost for Commercial (including vending) 3 percent of the adjusted gross receipts plus any site fees.

Shooting is generally allowed on BLM lands but should be done in a safe manner without damage to natural resources, shooting is restricted within one quarter mile of all recreations sites and structures that may be occupied. Please pick up all spent shells, targets, and trash. Visit the National Shooting Sports Foundation for an interactive map of places to shoot at <https://www.wheretoshoot.org/>

Forest Service

The Arizona Forest Service has five districts across the state and is part of Region 3 in the United States. These forests are the Apache Sitgreaves, Coconino, Coronado, Kaibab, Prescott, and Tonto National Forests. Each of these forests provide maps for their area called Motor Vehicle Use Maps or MVUM's. they are free and can be picked up at any of the FS offices. The maps area also available online as a PDF and can be used with the Avenza App.

FS requires permits for any events that use FS land:

- Costs are 5% of the adjusted gross receipts for one-time events; or
- 3% of adjusted gross receipts for multiple events under a single permit.
- Events require liability insurance.

AZ Game and Fish Department

The Arizona Game and Fish Commission establishes policy for the management, preservation, and harvest of wildlife. We make rules and regulations for managing, conserving, and protecting wildlife and fisheries resources, and safe and regulated watercraft and off-



highway vehicle operations for the benefit of the citizens of Arizona.

The Arizona Game and Fish Department's off-highway vehicle (OHV) safety education course includes instruction on the basic skills required to safely ride or operate an OHV. These include responsibilities of OHV riders to others and the environment, general information on preparing for the unexpected, additional educational resources, laws, rules and regulations for the safe, ethical and responsible operation and use of OHVs.

The safety course is required to renew or apply for an OHV sticker.

National Parks/National Monuments



National Parks and Monuments have restricted motorized travel to existing roads as marked.

When driving in a National Park or Monument, have the latest map so you know what is open to motorized use and what

is not.



Recreational shooting is not allowed on National Parks or Monument Lands.

Wildlife Refuge



Arizona has 8 Wildlife refuges located across the state. These areas are for wildlife viewing, hiking, fishing, boating, and hunting.

- Vehicles are permitted on designated roads only.
- All off road vehicle travel is prohibited on the refuge.
- All backwater lakes are no wake.

Check with the refuge you are in for camping and fire regulations. Refuge regulations are not the same at all refuges.

The following are not permitted: removal, defacing or damaging of rocks, minerals, artifacts or objects of antiquity. Collecting, possessing, molesting, disturbing, removing or transporting any animal or plants is prohibited except for legally taken game.

Wilderness

The Wilderness Act was passed in 1964, signed into law by President Lyndon B. Johnson. This Act established the National Wilderness Preservation System "...for the permanent good of the whole people." This law also directs federal land management agencies, including the National Park Service (NPS), to manage these wilderness areas and preserve wilderness character.

The Wilderness Act of 1964 established the National

Wilderness Preservation System, a national network of more than 800 federally designated wilderness areas. These wilderness areas are managed by the National Park Service, Bureau of Land Management, US Fish and Wildlife Service, and US Forest Service.

Travel in designated wilderness is by foot or horseback only.

Private Property

Private property is owned individually. Some roads on private property are open to use and some are not. Respect private property and obey signs as posted. Contact the individual landowner for access across their property prior to use. Ranching is big business in Arizona and some of our trails run through ranches and their facilities. These lands are private property and consist of leased land through the different land managers.

As an OHV user we need to respect these ranches and the work that they do. They can work to close the roads if necessary due to damage, danger to stock and destruction to habitat.

Ranchers lease land from federal and state property to graze cattle. This is why it is so important to leave all gates as you found them.

Ranchers make improvements such as cattle ponds, cattle tanks, windmills which provide water to their cattle but also to the local wildlife. Some of these improvements are paid for by the rancher and not the land manager so they need to be treated as private property. Destruction of these facilities is against the law and will hinder the cattle and wildlife.

Tribal Lands

Tribal lands in Arizona are not public lands and require a permit for use. Some areas are sacred, restricted, and not open to the public.

There are 22 Native American reservations in Arizona, and all operate under their own unique government structure. Contact the individual tribes in the area prior to any visit.

Law Enforcement

The FS, BLM and Game and Fish (G&F) all have law enforcement officers.

The G&F have dedicated OHV Law Enforcement Officers which have jurisdiction on all AZ lands except private property and tribal lands. AZ State Police also have jurisdiction on all AZ lands.

Dispersed Camping

Dispersed camping is also considered Boondocking, Overlanding and Wildcat camping.

Dispersed camping is allowed on most public lands and some AZ State Lands unless otherwise posted.

Dispersed camping is typically areas that do not have any facilities or designated as a developed campground. So, you are required to take out everything you bring including trash, waste. Most dispersed camping is allowed for a 14 day stay.

Some land managers have individual designated dispersed camp sites and others have areas along the roadways that are open and numbered for dispersed camping. This is due to overuse and damage to the environment.

Check with the local land manager for restrictions or dispersed camping areas. Most public lands allow camping 300 feet from the roadway.

All AZ State Land requires a permit to camp on.

What is Required to Ride on Public Lands

The following are required for any off highway vehicle for the use of public lands:

- An Arizona State Land Recreational Permit
- An OHV Decal if your vehicle is under 2500 pounds
- Large events require insurance and permits

Target Shooting

Target shooting is not allowed AZ State Trust Land. You can actively hunt on AZ State Trust Land. Other land agencies allow target shooting unless otherwise posted. Always check for the latest regulations for any area you may use.

Who printed this and how

This information was developed under the AZ 4 Wheel Drive Association (www.A4WDA.org) and printed by the A4WDA and the Arizona Four Wheel Drive Foundation (www.AFWDF.org).

All information is the latest at time of printing from the individual agencies websites. This brochure is for information only.

Always check with the local land managers office of the area, district and agency you are visiting for the any updated information.



**ARIZONA 4 WHEEL DRIVE
ASSOCIATION
WWW.A4WDA.ORG**

